








Fire Panel Selector Guide



Fire Systems

Features	D2071A	D9068	D7022 ^B	D7024 ^C	D9124 ^D	D8024	D10024A
							
Panel Type	DACT	DACT	Conventional	Conventional/ Addressable	Addressable	Analog/ Addressable	Analog/ Addressable
IDC / Style	2 Style B, 1 Style D	5 Style B	2 Style B/D (with D7014)	4/8 Style B/D (with D7014)	n/a	n/a	n/a
SLC / Style	n/a	n/a	n/a	2 Style 4.5 or 1 Style 6 (with D7039)	2 Style 3.5 (See note below)	2 Style 4/6 ^E	5 Style 4/6 ^E
SLC / Length	100 ohms	50 ohms	50 ohms @12 volts / 150 ohms @ 24volts	150ohms maximum loop resistance / 25 ohms for D7039 mux loop	60ohms maximum loop resistance	28 pf/ft; 3ohms/1,000 ft.; 25ohms maximum loop resistance, .25uf maxi- mum loop capacitance	28 pf/ft; 3ohms/1,000 ft.; 25ohms maximum loop resistance, .25uf maxi- mum loop capacitance
Number of Address	n/a	n/a	n/a	247 max	247 max	252 max	630 max.
NAC / Style	n/a	n/a	1 Style Y or 1 Style Z (with D7015)	2 Style Y or 2 Style Z (with D7015)	2 Style Y	2 Style Y	4 Style Y
NAC / Power	n/a	n/a	1 amp. Max	2.5 amps. Max/NAC; 4 amps max	1.8/NAC; 3.6 amps total	1 amp/24volts	2 amps/24volts
Alarm/Trouble Relay	Optional*	Trouble Relay / Form C	Optional	Yes	Yes (Must add D8129 Octorelay)	Yes	Yes
Event Log	n/a	n/a	n/a	100 / 499 with D7039	900	500	500
Programming Method	D5200	D7033	n/a	Front Panel / RAM	RAM/D5200	Front Panel/PC	Front Panel/PC
DACT	n/a	n/a	n/a	Yes	Yes	Optional (D9068)	Optional (D9068)
Approvals	UL/CSFM/MEA/FM/ULC	UL/CSFM	UL/CSFM	UL/FM/CSFM	UL/CSFM/MEA	UL/CSFM	UL/CSFM
Other					UL listed for intrusion and access control	Network capable up to 20 panels	Network capable up to 20 panels

^A Optional Alarm Relay and optional Phone Line trouble relay (D136)

^B No DACT capability

^C Option bus can be used to control up to two D7038s to expand NAC capability

^D The panel comes with 4 data loop connections. The addition of a second D8125 POPEX module provides four more data loop connections. Compatible with D6600 NetCom System.

^E Can be Style 7 using D333A

Fire products you can rely on.

BOSCH

What Fire Panel to Sell and When



Fire Systems



SMALL

D7022
D7024

Conventional Detection FACP

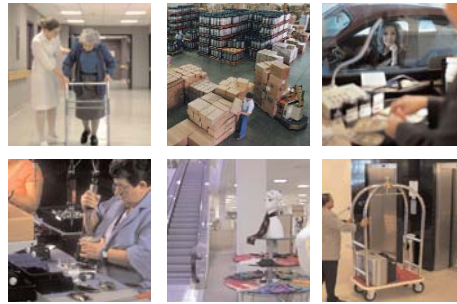
Advantages

- Suitable for small jobs
- Lowest cost of installation
- Easy to wire
- Easy to program

Drawbacks

- No distinction of devices in alarm or trouble
- Low customization
- Least information to Central Station
- Difficult to trouble shoot
- Smoke detector alarm setpoint unadjustable

- ▶ Small Retail
- Day Care
- Gas Station
- Fast Food
- Book Store



MEDIUM

D7024
D9124

Addressable Detection FACP

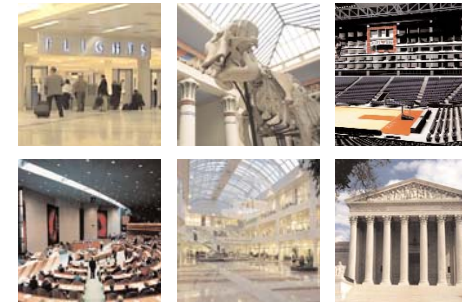
Advantages

- Suitable for small to medium jobs
- Mid-range cost of installation
- Increased level of information available to Central Station
- Exact device in alarm or trouble is identified at FACP
- Device can have a text label at FACP
- Easier to troubleshoot
- Can report contaminated detectors (D7024, D9124, D9412G, D7412G)
- Better level of customization

Drawbacks

- Alarm setpoint fixed in detector
- Higher cost of installation than conventional
- Wiring slightly more complicated than conventional

- ▶ Restaurants
- Retail Stores/Chains
- Apartment Buildings
- Schools
- Office Complexes
- Warehouses
- Banking
- Hotels
- Elderly Care



LARGE

D8024
D10024A

Analog/Addressable

Advantages

- Suitable for medium to large jobs
- Utilizes "smart" devices in 2 way communication with FACP
- High level of information to Central Station
- Allows alarm set point to be changed in detectors
- Detectors can drift compensate for contamination
- Better alarm response
- Automatic adjustments (Day/Night cycle)
- Earlier, more reliable alarm detection
- High degree of customization for customer
- High degree of system information available
- Simplified testing and maintenance
- Can report contaminated detectors

Drawbacks

- Highest cost of installation
- Wiring can be more complex
- Programming more complex

- ▶ Restaurants
- Retail Stores/Chains
- Apartment Buildings
- Government
- Schools
- (Colleges and Universities)
- Office Complex
- Medium to Large Warehouses
- Airports
- Public Malls
- Multiple Building Applications
- Military
- Hospitals
- Banking
- Hotels
- High Rise Buildings
- Arenas

Part # FO1U500865B

Fire products you can rely on.

BOSCH